

C3 PLUS Burrs & Sets

Cross cut achieves high stock removal



VERTRAU BLAU
Trust In The Blue

- Good surface quality & long tool life
- Good stock removal rate on various materials
- Suitable for fine & coarse stock removal on the key materials
- Suits steel, cast iron, stainless steel (INOX), nickel-based alloys & titanium alloys

C3 PLUS Burrs & Sets

Cross cut achieves high stock removal



TC burrs for universal applications are suitable for fine and coarse stock removal on the key materials used in industrial manufacturing. They provide a good stock removal rate and are not specific to a particular material.

Advantages:

- Good stock removal rate through optimum matching of tungsten carbide, geometry, cut and available coating.
- Long tool life.
- Reduced wear on the tool drive due to impact-free work without chatter marks, thanks to the high concentricity.
- High surface quality.

Recommendations for use:

- If possible, use the tools on powerful drives with elastically mounted spindles to avoid vibration.
- For the cost-effective use of burrs, work with higher rotational/cutting speeds.
Power recommendation for tool drives:
 - Shank diameter of 3 mm: 75 to 300 watts
 - Shank diameter of 6 mm: from 300 watts
- Please observe the rotational speed recommendations.

Applications:

- Milling out
- Levelling
- Deburring
- Cutting out holes
- Surface work
- Work on weld seams

Materials that can be worked:

- Steel, cast steel
- Stainless steel (INOX)
- Non-ferrous metals
- Cast iron

Matching tool drives:

- Flexible shaft drive
- Straight grinder
- Robot
- Machine tools

Recommended rotational speed range [RPM]

To determine the recommended cutting speed range [m/min], please proceed as follows:

- 1 Select the material group to be machined

- 2 Select the cut
- 3 Establish the cutting speed range
- 4 Select the required burr diameter

- 5 The cutting speed range and the burr diameter determine the recommended rotational speed range

1 Material group			Application	2 Cut	3 Cutting speed
Steel, cast steel	Steels up to 1,200 N/mm ² (< 38 HRC)	Construction steels, carbon steels, tool steels, non-alloyed steels, case-hardened steels, cast steel, alloyed steels	Coarse stock removal	3 PLUS	450–600 m/min
	Hardened, heat-treated steels over 1,200 N/mm ² (> 38 HRC)	Tool steels, tempering steels, alloyed steels, cast steel			250–350 m/min
Stainless steel (INOX)	Rust and acid-resistant steels	Austenitic and ferritic stainless steels	Coarse stock removal	3 PLUS	250–350 m/min
Non-ferrous metals	High-temperature resistant materials	Nickel-based and cobalt-based alloys (engine and turbine construction)	Coarse stock removal	3 PLUS	250–450 m/min
Cast iron	Grey cast iron, white cast iron	Cast iron with flake graphite EN-GJL (GG), with nodular graphite/nodular cast iron EN-GJS (GGG), white annealed cast iron EN-GJM (GTW), black cast iron EN-GJMB (GTS)	Coarse stock removal	3 PLUS	450–600 m/min

Cut 3 PLUS



4 Burr dia. [mm]	5 Cutting speeds [m/min]					
	250	350	450	600	750	900
	Rotational speed [RPM]					
1.5	53,000	74,000	95,000	127,000	159,000	191,000
2	40,000	56,000	72,000	95,000	119,000	143,000
3	27,000	37,000	48,000	64,000	80,000	95,000
4	20,000	28,000	36,000	48,000	60,000	72,000
6	13,000	19,000	24,000	32,000	40,000	48,000
8	10,000	14,000	18,000	24,000	30,000	36,000
10	8,000	11,000	14,000	19,000	24,000	29,000
12	7,000	9,000	12,000	16,000	20,000	24,000
16	5,000	7,000	9,000	12,000	15,000	18,000
20	4,000	6,000	7,000	10,000	12,000	14,000
25	3,000	4,000	6,000	8,000	10,000	11,000

C3 PLUS Burrs & Sets

Cross cut achieves high stock removal



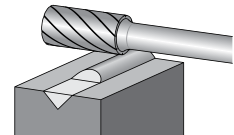
Size Description US Designation Article Number Barcode 

ZYA Cylindrical

Cylindrical burr according to DIN 8032

1/4" Shank (inch)

1/4 x 5/8	ZYA 6.35x15.9x6.35 C3 PLUS	SA-1	21724032	4007220052471	1
5/16 x 3/4	ZYA 7.9x19x6.35 C3 PLUS	SA-2	21724052	4007220052501	1
3/8 x 3/4	ZYA 9.5x19x6.35 C3 PLUS	SA-3	21724062	4007220052532	1
1/2 x 1	ZYA 12.7x25.4x6.35 C3 PLUS	SA-5	21724102	4007220052594	1
5/8 x 1	NI ZYA 15.9x25.4x6.35 C3 PLUS	SA-6	21724112	4007220052624	1
3/4 x 1	ZYA 19x25.4x6.35 C3 PLUS	SA-7	21724122	4007220052655	1
1 x 1	ZYA 25.4x25.4x6.35 C3 PLUS	SA-9	21724162	4007220052693	1



ZYA

6mm Shank (mm)

4 x 13	ZYA 0413/6 C3 PLUS		21101526	4007220045435	1
6 x 16	ZYA 0616/6 C3 PLUS		21101626	4007220045480	1
8 x 20	ZYA 0820/6 C3 PLUS		21101726	4007220045541	1
10 x 13	ZYA 1013/6 C3 PLUS		21101826	4007220045596	1
10 x 20	ZYA 1020/6 C3 PLUS		21102126	4007220045879	1
12 x 25	ZYA 1225/6 C3 PLUS		21101926	4007220045695	1
16 x 25	ZYA 1625/6 C3 PLUS		21102026	4007220045800	1

ZYAS Cylindrical End Cut

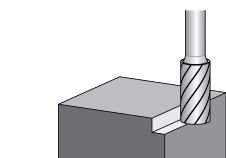
Cylindrical burr according to DIN 8032 with circumferential and end cut.

1/4" Shank (inch)

1/4 x 5/8	NI ZYAS 6.35x15.9x6.35 C3 PLUS	SB-1	21724212	4007220052761	1
5/16 x 3/4	NI ZYAS 7.9x19x6.35 C3 PLUS	SB-2	21724232	4007220052785	1
1/2 x 1	NI ZYAS 12.7x25.4x6.35 C3 PLUS	SB-5	21724282	4007220052860	1
5/8 x 1	NI ZYAS 15.9x25.4x6.35 C3 PLUS	SB-6	21724292	4007220052891	1

6mm Shank (mm)

6 x 16	ZYAS 0616/6 C3 PLUS		21100226	4007220044971	1
8 x 20	ZYAS 0820/6 C3 PLUS		21100326	4007220045022	1
10 x 20	ZYAS 1020/6 C3 PLUS		21100726	4007220045305	1
12 x 25	ZYAS 1225/6 C3 PLUS		21100526	4007220045176	1
16 x 25	ZYAS 1625/6 C3 PLUS		21100626	4007220045251	1



ZYAS

3mm Shank (mm)

3 x 13	ZYAS 0313/3 C3 PLUS		21200283	4007220049501	1
6 x 7	ZYAS 0607/3 C3 PLUS		21200383	4007220049532	1
6 x 13	ZYAS 0613/3 C3 PLUS		21200483	4007220049563	1

NI New to the range



C3 PLUS Burrs & Sets

Cross cut achieves high stock removal



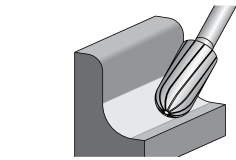
Size Description US Designation Article Number Barcode 

WRC Cylindrical Radius End

Cylindrical burr with radius end according to DIN 8032. Combination of cylindrical and ball-shaped geometries.

1/4" Shank (inch)

1/4 x 5/8	WRC 6.35x15.9x6.35 C3 PLUS	SC-1	21724392	4007220053058	1
5/16 x 3/4	WRC 7.9x19x6.35 C3 PLUS	SC-2	21724412	4007220053089	1
3/8 x 3/4	WRC 9.5x19x6.35 C3 PLUS	SC-3	21724422	4007220053102	1
1/2 x 1	WRC 12.7x25.4x6.35 C3 PLUS	SC-5	21724462	4007220053164	1
5/8 x 1	WRC 15.9x25.4x6.35 C3 PLUS	SC-6	21724472	4007220053195	1
3/4 x 1	WRC 19x25.4x6.35 C3 PLUS	SC-7	21724482	4007220053225	1



WRC

6mm Shank (mm)

6 x 16	WRC 0616/6 C3 PLUS		21105026	4007220046234	1
8 x 20	WRC 0820/6 C3 PLUS		21105126	4007220046302	1
10 x 20	WRC 1020/6 C3 PLUS		21105226	4007220046388	1
10 x 25	WRC 1025/6 C3 PLUS		21105526	4007220046715	1
12 x 25	WRC 1225/6 C3 PLUS		21105326	4007220046500	1
16 x 25	WRC 1625/6 C3 PLUS		21105426	4007220046630	1

3mm Shank (mm)

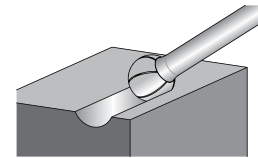
3 x 13	WRC 0313/3 C3 PLUS		21205183	4007220049662	1
6 x 13	WRC 0613/3 C3 PLUS		21205283	4007220049693	1

KUD Ball

Ball-shaped burr according to DIN 8032.

1/4" Shank (inch)

3/16 x 1/8	NI KUD 4.8x3.17x6.35 C3 PLUS	SD-14	21724532	4007220053300	1
1/4 x 3/16	KUD 6.35x4.8x6.35 C3 PLUS	SD-1	21724542	4007220053324	1
5/16 x 1/4	KUD 7.9x6.35x6.35 C3 PLUS	SD-2	21724552	4007220053355	1
3/8 x 5/16	KUD 9.5x7.9x6.35 C3 PLUS	SD-3	21724562	4007220053379	1
1/2 x 7/16	KUD 12.7x11.1x6.35 C3 PLUS	SD-5	21724582	4007220053430	1
5/8 x 9/16	NI KUD 15.9x14.3x6.35 C3 PLUS	SD-6	21724592	4007220053461	1
3/4 x 11/16	NI KUD 19x17.4x6.35 C3 PLUS	SD-7	21724602	4007220053485	1



KUD

6mm Shank (mm)

4 x 3	KUD 0403/6 C3 PLUS		21112026	4007220046791	1
6 x 5	KUD 0605/6 C3 PLUS		21112526	4007220046821	1
8 x 7	KUD 0807/6 C3 PLUS		21112626	4007220046883	1
10 x 9	KUD 1009/6 C3 PLUS		21112726	4007220046951	1
12 x 10	KUD 1210/6 C3 PLUS		21112826	4007220047033	1
16 x 14	KUD 1614/6 C3 PLUS		21112926	4007220047132	1
20 x 18	KUD 2018/6 C3 PLUS		21113026	4007220047224	1

3mm Shank (mm)


3 x 2	KUD 0302/3 C3 PLUS		21211083	4007220049778	1
4 x 3	KUD 0403/3 C3 PLUS		21212583	4007220049792	1
6 x 5	KUD 0605/3 C3 PLUS		21213083	4007220049815	1

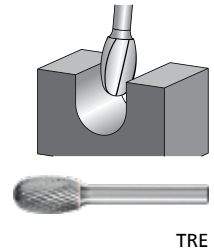
NI New to the range

C3 PLUS Burrs & Sets

Cross cut achieves high stock removal



Size	Description	US Designation	Article Number	Barcode	
TRE Oval					
Oval burr according to DIN 8032.					
1/4" Shank (inch)					
1/4 x 3/8	TRE 6.35x9.5x6.35 C3 PLUS	SE-1	21724632	4007220053546	1
3/8 x 5/8	TRE 9.5x15.9x6.35 C3 PLUS	SE-3	21724642	4007220053560	1
1/2 x 7/8	TRE 12.7x22.2x6.35 C3 PLUS	SE-5	21724652	4007220053591	1
6mm Shank (mm)					
6 x 10	TRE 0610/6 C3 PLUS		21134826	4007220048771	1
8 x 13	TRE 0813/6 C3 PLUS		21135026	4007220048894	1
10 x 16	TRE 1016/6 C3 PLUS		21134926	4007220048832	1
12 x 20	TRE 1220/6 C3 PLUS		21135126	4007220048962	1
3mm Shank (mm)					
3 x 7	TRE 0307/3 C3 PLUS		21210083	4007220049754	1

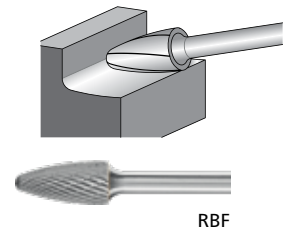


TRE

RBF Tree Radius End

Tree-shaped burr with radius end according to DIN 8032.

1/4" Shank (inch)					
1/4 x 5/8	RBF 6.35x15.9x6.35 C3 PLUS	SF-1	21724692	4007220053669	1
3/8 x 3/4	RBF 9.5x19x6.35 C3 PLUS	SF-3	21724702	4007220053690	1
1/2 x 1	RBF 12.7x19x6.35 C3 PLUS	SF-5	21724732	4007220053782	1
1/2 x 3/4	RBF 12.7x25.4x6.35 C3 PLUS	SF-5	21724722	4007220053751	1
5/8 x 1	NI RBF 15.9x25.4x6.35 C3 PLUS	SF-6	21724742	4007220053812	1
6mm Shank (mm)					
6 x 18	RBF 0618/6 C3 PLUS		21117326	4007220047606	1
8 x 20	RBF 0820/6 C3 PLUS		21117626	4007220047651	1
10 x 20	RBF 1020/6 C3 PLUS		21117726	4007220047705	1
12 x 25	RBF 1225/6 C3 PLUS		21117826	4007220047781	1
16 x 30	RBF 1630/6 C3 PLUS		21117926	4007220047873	1
3mm Shank (mm)					
6 x 13	RBF 0613/3 C3 PLUS		21230083	4007220050019	1



RBF


NI New to the range

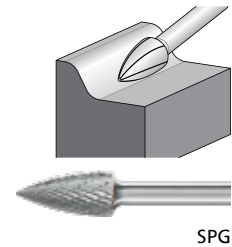


C3 PLUS Burrs & Sets

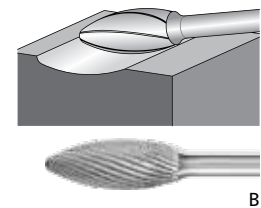
Cross cut achieves high stock removal



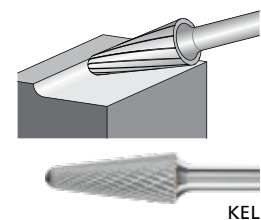
Size	Description	US Designation	Article Number	Barcode	
SPG Pointed Tree					
Pointed tree-shaped burr according to DIN 8032, flattened tip.					
1/4" Shank (inch)					
1/4 x 5/8	SPG 6.35x15.9x6.35 C3 PLUS	SG-1	21724782	4007220053874	1
3/8 x 3/4	SPG 9.5x19x6.35 C3 PLUS	SG-3	21724802	4007220053935	1
1/2 x 1	SPG 12.7x25.4x6.35 C3 PLUS	SG-5	21724812	4007220053966	1
6mm Shank (mm)					
6 x 18	SPG 0618/6 C3 PLUS		21122526	4007220047941	1
10 x 20	SPG 1020/6 C3 PLUS		21122626	4007220048023	1
12 x 25	SPG 1225/6 C3 PLUS		21122726	4007220048146	1
3mm Shank (mm)					
6 x 13	SPG 0613/3 C3 PLUS		21222783	4007220049983	1



B Flame					
Flame-shaped burr according to ISO 7755/8.					
1/4" Shank (inch)					
5/16 x 3/4	B 7.9x19x6.35 C3 PLUS	SH-2	21724872	4007220054055	1
1/2 x 1 1/4	B 12.7x31.7x6.35 C3 PLUS	SH-5	21724882	4007220054079	1
6mm Shank (mm)					
8 x 20	B 0820/6 C3 PLUS		21103126	4007220046067	1
12 x 30	B 1230/6 C3 PLUS		21103326	4007220046111	1



KEL Cone Radius End					
Conical burr with radius end according to DIN 8032.					
1/4" Shank (inch)					
5/16 x 1	KEL 8.3x25.8x6.35 C3 PLUS	SL-2	21725142	4007220054406	1
3/8 x 1 3/16	KEL 9.9x30.3x6.35 C3 PLUS	SL-3	21725152	4007220054437	1
1/2 x 1 1/8	KEL 12.7x28.6x6.35 C3 PLUS	SL-5	21725162	4007220054468	1
5/8 x 1 5/16	N! KEL 15.9x33.3x6.35 C3 PLUS	SL-6	21725182	4007220054499	1
6mm Shank (mm)					
8 x 20	N! KEL 0820/6 C3 PLUS		21124996	4007220955581	1
10 x 20	KEL 1020/6 C3 PLUS		21125026	4007220048481	1
12 x 25	KEL 1225/6 C3 PLUS		21125126	4007220048559	1
12 x 30	KEL 1230/6 C3 PLUS		21125226	4007220048634	1
16 x 30	KEL 1630/6 C3 PLUS		21125326	4007220048719	1



N! New to the range

C3 PLUS Burrs & Sets

Cross cut achieves high stock removal



Size Description US Designation Article Number Barcode 

SKM Pointed Cone

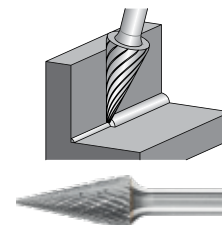
Conical pointed burr according to DIN 8032, flattened tip.

1/4" Shank (inch)

1/4 x 3/4	SKM 6.35x19x6.35 C3 PLUS	SM-1	21725212	4007220054567	1
3/8 x 3/4	SKM 9.5x19x6.35 C3 PLUS	SM-3	21725232	4007220054604	1
1/2 x 1	SKM 12.7x25.4x6.35 C3 PLUS	SM-5	21725242	4007220054635	1

6mm Shank (mm)

6 x 18	SKM 0618/6 C3 PLUS		21115026	4007220047293	1
10 x 20	SKM 1020/6 C3 PLUS		21115126	4007220047354	1
12 x 25	SKM 1225/6 C3 PLUS		21115226	4007220047422	1



SKM

C3 PLUS Burr Sets

1/4" Shank (inch)

1505 - 5pc Set - 1/4" shank		26005693	4007220818046	1
Contents: SA-1, SC-1, SC-5, SF-5, SG-3				
1510 - 10pc Set - 1/4" shank		26005694	4007220818053	1
Contents: SA-1, SA-3, SC-1, SC-3, SC-5, SD-3, SE-3, SF-1, SF-5, SG-3				

6mm Shank (mm)

1503 - 10pc Set - 6mm shank		26005691	4007220818022	1
Contents: ZYA 1025, ZYA 1225, WRC 0616, WRC 1025, WRC 1225, RBF 0618, RBF 1020, RBF 1225, KEL 1020, TRE 1220				
1504 - 5pc Set - 6mm shank		26005692	4007220818039	1
Contents: ZYA 1025, WRC 1025, WRC 1225, RBF 1020, TRE 1220				



C3 PLUS - 1/4" Extended Shank

- HSS shanks can be cut to length

1/4" Shank (inch)

3/8 x 3/4	ZYA 9.5x19x6.35-150 C3 PLUS	SA-3 L4	21725812	4007220054819	1
1/2 x 1	ZYA 12.7x25.4x6.35-150 C3 PLUS	SA-5 L4	21725822	4007220054833	1
3/8 x 3/4	WRC 9.5x19x6.35-150 C3 PLUS	SC-3 L4	21725872	4007220054857	1
1/2 x 1	WRC 12.7x25.4x6.35-150 C3 PLUS	SC-5 L4	21725882	4007220054871	1
1/2 x 7/16	KUD 12.7x11.1x6.35-150 C3 PLUS	SD-5 L4	21725942	4007220054918	1
1/4 x 3/8	TRE 6.35x9.5x6.35-150 C3 PLUS	SE-1 L4	21725982	4007220271193	1
3/8 x 3/4	RBF 9.5x19x6.35-150 C3 PLUS	SF-3 L4	21726052	4007220054970	1
1/2 x 1	RBF 12.7x25.4x6.35-150 C3 PLUS	SF-5 L4	21726062	4007220054994	1
3/8 x 1 1/8	KEL 9.5x28.6x6.35-150 C3 PLUS	SL-3 L4	21726222	4007220055090	1



ZYA Series



WRC Series



KUD Series



TRE Series



RBF Series



KEL Series

Safety Recommendations



Wear eye protection!



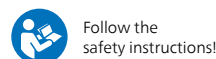
Wear hearing protection!



Wear a dust mask!



Wear gloves!



Follow the safety instructions!



Do not use if damaged!

PFERD HEAD OFFICE
1-3 Conifer Crescent
Dingley, VIC 3172
Phone: (03) 9565 3200

PFERD New South Wales
43 Bentley Street
Wetherill Park, NSW 2164
Phone: (02) 9725 1833
Phone: (02) 9725 1873

PFERD Queensland
2/20 Thomas Hanlon Court
Yatala, QLD 4207
Phone: (07) 3323 1800

PFERD South Australia
4/36-38 Tikalara Street
Regency Park, SA 5010
Phone: (08) 8340 1221

PFERD Western Australia
Unit 2/13 Canvale Road
Canning Vale, WA 6155
Phone: (08) 9455 6055

PFERD Tasmania
Alltrade Agencies
34 Trevor Street
Ulverstone, TAS 7315
Phone: 0409 371 225

PFERD Northern Territory
NTIA - NT Industrial Agencies
Phone: 0455 555 109

customerservice@pferd.com.au
1300 073 373
www.pferd.com.au

Follow us on social media

